

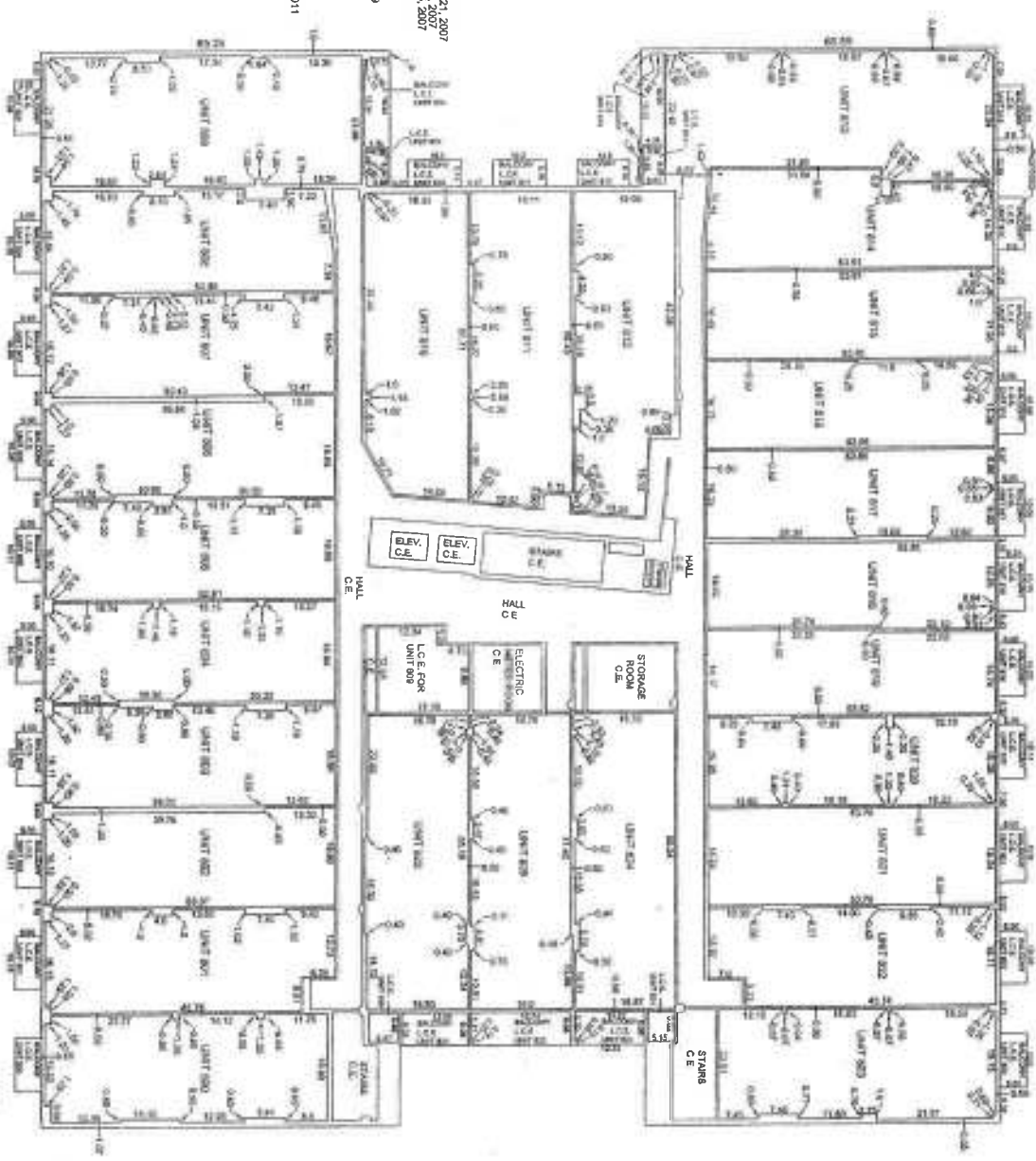
1440 Renaissance Drive, Suite 140, Park Ridge, IL 60068 Phone 847-296-6900 Fax 847-296-6906
PLAT OF SURVEY

DOCUMENT WITH
 THIS EXHIBIT



Order: 1104091026 Desc: \$126.00
 Esri - Utility Water Pipe - 4818200
 Cook County Recorder of Deeds
 Date: 02/08/2011 11:48 AM Pg: 1 of 10

UNITS 809 AND 823 AMENDED SEPTEMBER 21, 2007
 UNITS 817 AND 826 AMENDED OCTOBER 8, 2007
 UNITS 824 AND 825 AMENDED OCTOBER 15, 2007
 UNIT 824 AMENDED OCTOBER 15, 2007
 UNIT 821 AMENDED JUNE 18, 2008
 UNIT 808 AMENDED JUNE 18, 2008
 UNIT 822 AMENDED DECEMBER 11, 2008
 UNIT 814 AMENDED JUNE 4, 2010
 UNIT 802 AMENDED SEPTEMBER 18, 2010
 UNITS 800, 803, 804, 805, 806, 807, 816, 817,
 818, 819 AND 823 AMENDED JANUARY 24, 2011



8th FLOOR

ORDER No. 0697
 EXHIBIT A
 PAGE 10



HORIZONTAL PLANES SHOWN HEREON ARE MEASURED FROM THE TOP OF UNFINISHED FLOOR TO THE BOTTOM OF UNFINISHED CEILING.
 VERTICAL PLANES SHOWN HEREON ARE MEASURED FROM INTERIOR FACE OF UNFINISHED PERIMETER WALLS.
 ELEVATIONS SHOWN HEREON ARE IN RELATION TO:
 BENCHMARK NO. 5552
 LOCATED ABOUT 4.5 FEET NORTH OF NORTH LINE OF IV AVENUE STREET AND ABOUT ON EAST LINE OF S MADISON MARK CUT AT SOUTHWEST CORNER OF STONE BUILDING, MARK IS 3.9 FEET ABOVE SIDEWALK ELEVATION =+18.822
 UPPER ELEVATION ** 123.76 ON THIS PAGE ONLY
 LOWER ELEVATION ** 111.88 ON THIS PAGE ONLY

STATE OF ILLINOIS
 COUNTY OF COOK) SS
 WE, CERTIFIED SURVEYOR INC., HEREBY CERTIFY THAT WE HAVE SURVEYED THE ABOVE DESCRIBED PROPERTY, LOCATED THE BUILDING THEREON AND DIVIDED BOTH VERTICAL AND HORIZONTAL PLANS AS A CONDOMINIUM AS SHOWN ON THIS PLAT OF SURVEY. ALL CORRECT REPRESENTATION OF SAID SURVEY, ALL DISTANCES, DIMENSIONS AND ELEVATIONS ARE GIVEN IN FEET AND DECIMAL PARTS OF A FOOT. THIS PROFESSIONAL SERVICE CONFORMS TO THE CURRENT ILLINOIS MINIMUM STANDARDS FOR BOUNDARY SURVEYS AND CONDOMINIUMS
 DATED THIS 15th DAY OF SEPTEMBER, A.D. 2007

PROFESSIONAL LAND SURVEYOR FROM 08/07
 I LPADSE Expires NOVEMBER 30 2008