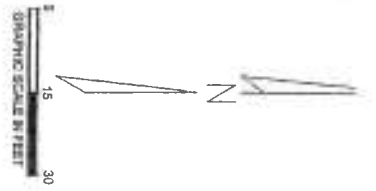
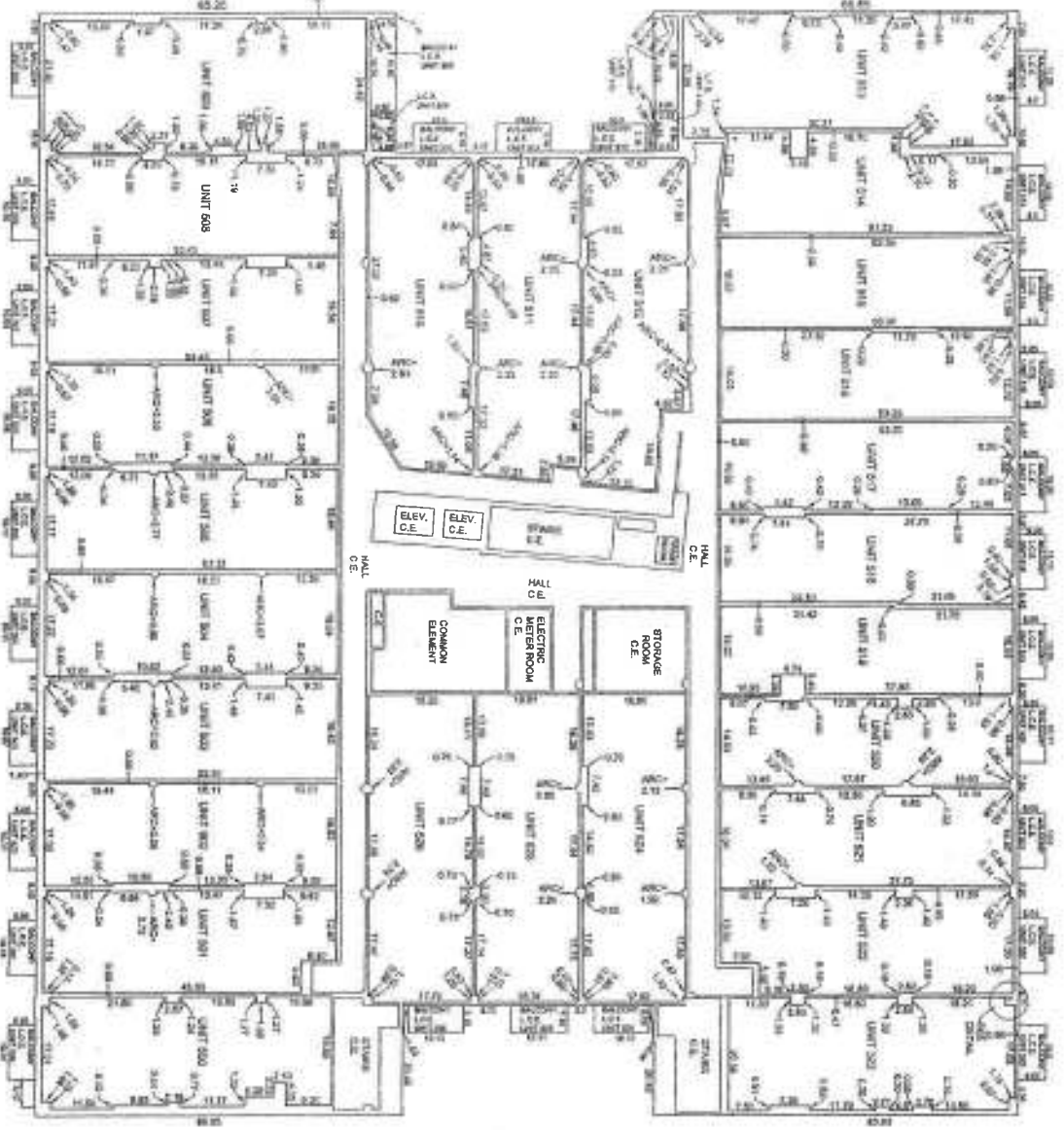


1440 Renaissance Drive, Suite 140, Park Ridge, IL 60068 Phone 847-296-6900 Fax 847-296-6906
PLAT OF SURVEY

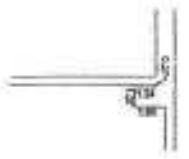


UNITS 506, 508, 509, 518, 517, 518 AND 520 AMENDED MAY 25, 2007
 UNITS 500, 513 AND 514 AMENDED JUNE 12, 2007
 UNITS 512 AND 523 AMENDED AUGUST 2, 2007
 UNIT 524 AMENDED AUGUST 20, 2007
 UNIT 525 AMENDED SEPTEMBER 21, 2007
 UNIT 516 AMENDED NOVEMBER 5, 2007
 UNIT 504 AMENDED FEBRUARY 27, 2008
 UNIT 505 AMENDED FEBRUARY 27, 2008
 UNIT 502 AMENDED OCTOBER 14, 2009
 UNIT 501 AMENDED FEBRUARY 12, 2010
 UNITS 503, 505, 507, 522 AND 528
 AMENDED JANUARY 24, 2011

5th FLOOR
 ORDER No. 0697
 EXHIBIT A
 PAGE 7



DOCUMENT WITH THIS EXHIBIT



HORIZONTAL PLANES SHOWN HEREON ARE MEASURED FROM FINISHED FLOOR TO THE BOTTOM OF UNFINISHED CEILING.
 VERTICAL PLANES SHOWN HEREON ARE MEASURED FROM INTERIOR FACE OF UNFINISHED PERIMETER WALLS.
 ELEVATIONS SHOWN HEREON ARE IN RELATION TO:
 BENCHMARK NO. 5882
 LOCATED ABOUT 40 FEET NORTH OF NORTH LINE OF W. AVE. STREET AND ABOUT ON EAST LINE OF S. INDIAN AVENUE
 MARK CUT AT SOUTHWEST CORNER OF STONE WINDOW SILL ON WEST SIDE OF 2 STORY BRICK BUILDING, MARK IS 3 FEET ABOVE SIDEWALK ELEVATION = +78.622
 UPPER ELEVATION ** 65.92 ON THIS PAGE ONLY
 LOWER ELEVATION ** 74.71 ON THIS PAGE ONLY

STATE OF ILLINOIS
 COUNTY OF COOK) SS
 I, *[Signature]*
 WE, CERTIFIED SURVEYOR INC., HEREBY CERTIFY THAT WE HAVE SURVEYED THE ABOVE DESCRIBED PROPERTY, LOCATED THE BUILDING THEREON AND DIVIDED BOTH VERTICALLY AND HORIZONTALLY AS A CONDOMINIUM AS SHOWN ON THE ATTACHED PLAN WHICH IS A TRUE AND CORRECT REPRESENTATION OF THE SAME. THE DIMENSIONS, DISTANCES, DIMENSIONS AND ELEVATIONS ARE GIVEN IN FEET AND DECIMAL PARTS OF A FOOT. THIS PROFESSIONAL SERVICE CONFORMS TO THE CURRENT ILLINOIS MANUAL STANDARDS FOR BOUNDARY SURVEYS AND CONDOMINIUMS.
 DATED THIS 18th DAY OF MAY A.D. 2011
 PROFESSIONAL LAND SURVEYOR #2777
 LICENSE EXPIRES NOVEMBER 30, 2009