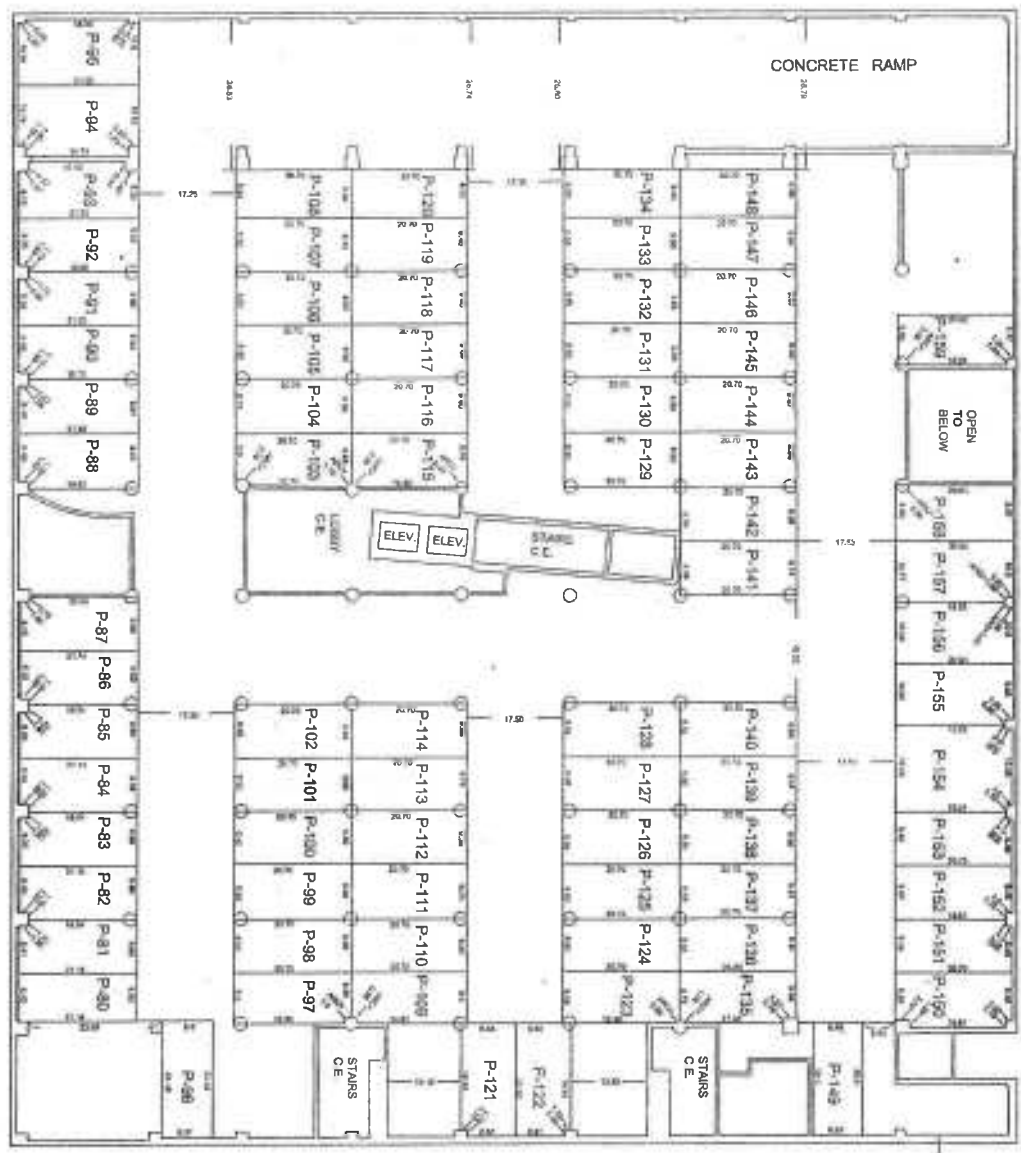
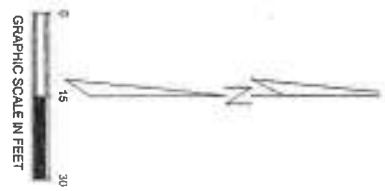


1440 Renaissance Drive, Suite 140, Park Ridge, IL 60068 Phone 847-296-6900 Fax 847-296-6906  
**PLAT OF SURVEY**

DOCUMENT WITH THIS EXHIBIT

110442010671 2011



INDICATES LIMITED COMMON ELEMENT  
 INDICATES COMMON ELEMENT

**MEZZANINE**

ORDER NO. 0697  
 EXHIBIT A  
 PAGE 3

- P-87, P-90, P-98, P-111, P-134, P-139 AND P-149 AMENDED APRIL 18, 2007
- P-93, P-136, P-145 AND P-148 AMENDED MAY 1, 2007
- P-101, P-102, P-103, P-108, P-113, P-132 AND P-151 AMENDED MAY 1, 2007
- P-98 AND P-118 AMENDED MAY 25, 2007
- P-86, P-85, P-97, P-100, P-116, P-120, P-122, P-127, P-131 AND P-143 AMENDED JUNE 12, 2007
- P-81, P-83, P-129, P-142, P-180 AND P-156 AMENDED JULY 13, 2007
- P-99, P-104, P-113, P-155, P-157 AND P-159 AMENDED AUGUST 2, 2007
- P-126 AND P-137 AMENDED SEPTEMBER 13, 2007
- P-110 AMENDED OCTOBER 18, 2007
- P-118 AMENDED JANUARY 4, 2008

- P-92, P-119 AND P-159 AMENDED APRIL 18, 2008
- P-123 AMENDED JUNE 18, 2008
- P-109 AMENDED SEPTEMBER 26, 2008
- P-107 AMENDED SEPTEMBER 26, 2008
- P-106 AMENDED DECEMBER 3, 2008
- P-91 AND P-141 AMENDED MAY 14, 2009
- P-152 AMENDED NOVEMBER 11, 2009
- P-135 AMENDED FEBRUARY 12, 2010
- P-140 AMENDED JUNE 4, 2010
- P-88 AMENDED SEPTEMBER 18, 2010
- P-80, P-123, P-124, P-128, P-138, P-139 AND P-144, P-186, P-197 AMENDED JANUARY 24, 2011



HORIZONTAL PLANES SHOWN HEREON ARE MEASURED FROM THE TOP OF UNFINISHED FLOOR TO THE BOTTOM OF UNFINISHED CEILING VERTICAL PLANES SHOWN HEREON ARE MEASURED FROM INTERIOR FACE OF UNFINISHED PERIMETER WALLS.  
 ELEVATIONS SHOWN HEREON ARE IN RELATION TO:  
 BENCHMARK N-5522  
 LOCATED ABOUT 4.5 FEET NORTH OF NORTH LINE OF W. ADAMS STREET AND ABOUT ON EAST LINE OF S. RACINE AVENUE.  
 MARK CUT AT SOUTHWEST CORNER OF STONE WINDOWSILL ON WEST SIDE OF 2 STORY BRICK BUILDING. MARK IS 3.3 FEET ABOVE SIDEWALK ELEVATION \*\*+18 622

UPPER ELEVATION \*\* +39.0 ON THIS PAGE ONLY  
 LOWER ELEVATION \*\* +32.0 ON THIS PAGE ONLY

STATE OF ILLINOIS  
 COUNTY OF COOK, ILL.  
 WE, CERTIFIED SURVEYOR INC., HEREBY CERTIFY THAT WE HAVE SURVEYED THE ABOVE DESCRIBED PROPERTY, LOCATED THE BUILDING THEREON AND DIVIDED BOTH VERTICALLY AND HORIZONTALLY AS A CONDOMINIUM AS SHOWN ON THE ATTACHED PLAT WHICH IS A TRUE AND CORRECT REPRESENTATION OF SAID SURVEY. ALL DISTANCES, DIMENSIONS AND ELEVATIONS ARE GIVEN IN FEET AND DECIMAL PARTS OF A FOOT. THIS PROFESSIONAL SERVICE CONFORMS TO THE CURRENT ILLINOIS MINIMUM STANDARDS FOR CONDOMINIUM SURVEYS.  
 DATED THIS 30th DAY OF DECEMBER, A.D. 2008

PROFESSIONAL ILLINOIS LAND SURVEYOR #2777  
 LICENSE EXPIRES NOVEMBER 30, 2008